



From Climate Change to ClimateDogs

Why crafting a new dialogue is essential.....



Graeme Anderson
Extension Specialist
DPI Farm Services Victoria

DEPARTMENT OF
PRIMARY INDUSTRIES

farm
services

Insanity.....

**“Doing the same things and
expecting a different result.....”**

Don't forget the "E"

Extension

Engagement

Education

Empowerment

This is about people.....

Austrian philosopher Ivan Illich

“.....tell a new and powerful tale,.... one so persuasive that it sweeps away the old myths and becomes the preferred story, one so inclusive that it gathers all the bits of our past and our present into a coherent whole, one that even shines some light into our future so that we can take the next step.....”

***“If you want to change a society,
then you have to tell an alternative story”***

DPI – Farm Services Victoria

- **State Govt Funding** *Approx \$1M per annum*
- **Climate extension & capability** *services across grains, dairy, meat & wool, horticulture networks*
- **Survey of 1500 farmers** *on climate/emissions*
- **Local “Upscaling”** *sessions with farmers*
- **Seasonal risk newsletters** *“The Break”, “Climate-ready Horticulture” and “Milking the Weather”*
- **Positive & practical action** *farmer case studies*
- **Carbon** *Toolkits in Agriculture Network & news*
- **Communicate** *key climate/agriculture DPI research*
- **Climate risk web** - www.dpi.vic.gov.au/climaterisk



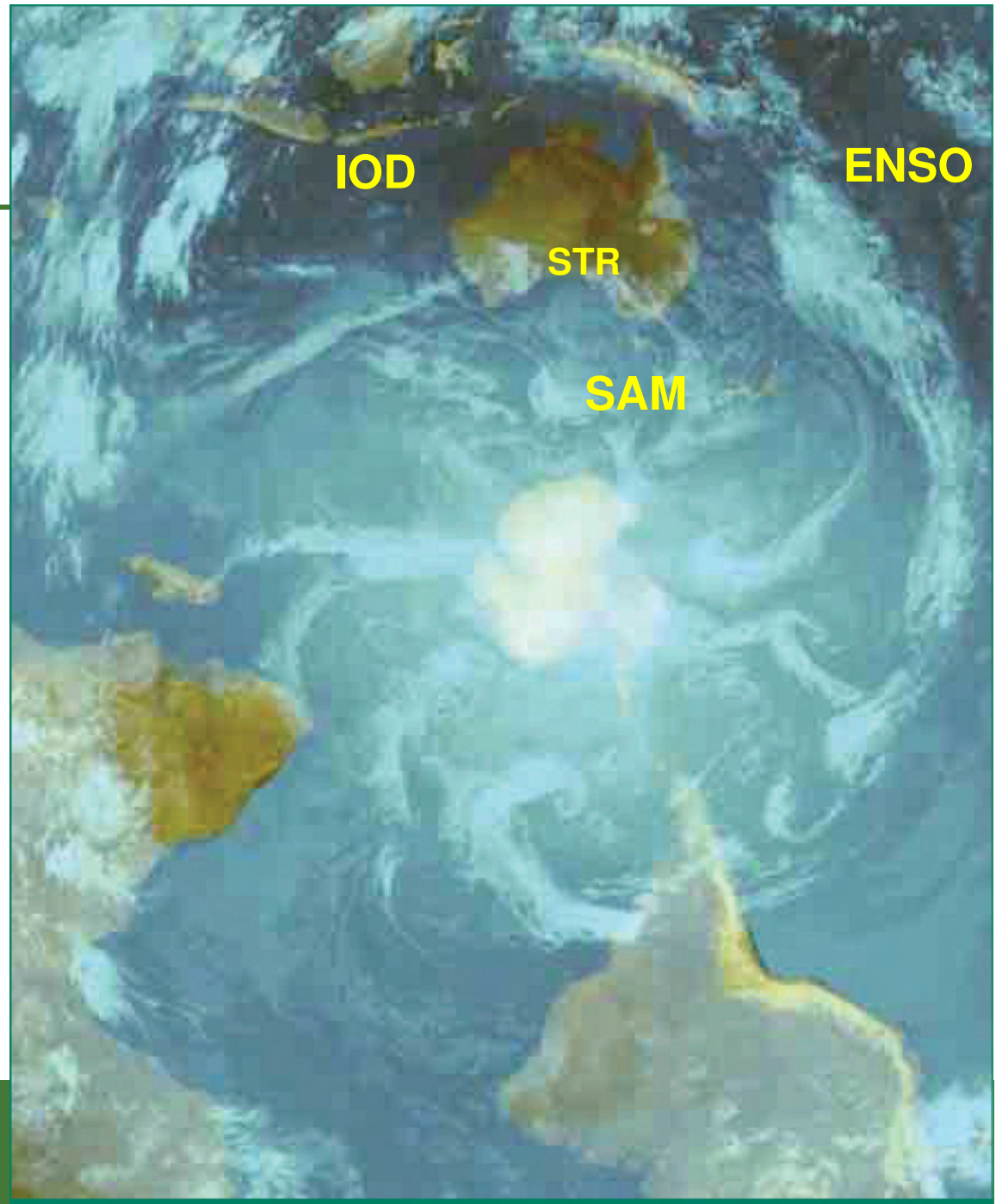
DPI Climate Extension

- Has to be.... “Timely, Relevant, Accessible”
- 480 sessions delivered to over 12,000 people past 2.5 years – via request/referral
- 60% to farmers and public
- 20% to service providers
- 20% to our own DPI staff

Key climate influencers
for Victoria's rainfall:

- **ENSO** – Pacific Ocean moisture source
- **IOD** – Indian Ocean moisture source
- **SAM** – the fronts....
- **STR** – the highs.....

*Key drivers of our seasonal variability in Victoria – always have been and always will be!
(BOM, CSIRO reports etc)*





ENSO



RIDGY



SAM



INDY

To see the climate dog short animations got to:

www.dpi.vic.gov.au/climaterisk

“Upscaling” session with farmers.....

- Utilise local experience and observations
- Connect local seasons to key climate drivers & science
- “Penny Drop” moments (it effects my weather/seasons!)
- What drives variability?
- What’s normal?
- What isn’t?
- What’s next? Tools?

FUTURE FARMING Productive, Competitive and Sustainable

The Fast Break

Seasonal climate and risk information for Victorian cropping regions
Volume 5/Issue 2 March 2010 www.dpi.vic.gov.au/climate/risk ISSN 1833-719

Seasonal model forecasts for Victoria over the next three months:

Current March outlook	Last month (Feb) outlook
PACIFIC OCEAN: Warm to neutral	PACIFIC OCEAN: Warm
INDIAN OCEAN: Warm to neutral	INDIAN OCEAN: Slightly warm to neutral
RAINFALL: Average	RAINFALL: Average and neutral
TEMPERATURE: Slightly warmer	TEMPERATURE: Slightly warm

30 Day Moving SOI

Australian Bureau of Meteorology

The SOI has rebounded to hover around -8, following the negative dive resulting from cyclone activity around Tahiti.
<http://www.bom.gov.au/climate/enso/>

NOAA

The Pacific Ocean remains warm along most of the equator. The Coral and Timor seas are warmer than average.
<http://www.osdpd.noaa.gov/ml/ocean/sst/anomaly.html>

Some principles for communicating:

- Accessible & timely (for decision making today)
- Relevant to their location and industry (situation)
- Acknowledges their own experience & observations
- In language they can understand – create your own dialogue and explain for their perspective
- From sources whom they trust (preferably multiple)
- Know how best to frame your story, and be very careful of tarnished language/words
- In the right context - for action and “getting on with it”
- Extension can do this (public & private practitioners) – if invested in to do so.....

Thank You

www.dpi.vic.gov.au/climaterisk

Site has climate dog animations, seasonal climate newsletters, carbon toolkits, case studies of farmers taking action etc.....



graeme.anderson@dpi.vic.gov.au

DEPARTMENT OF
PRIMARY INDUSTRIES

farm
services